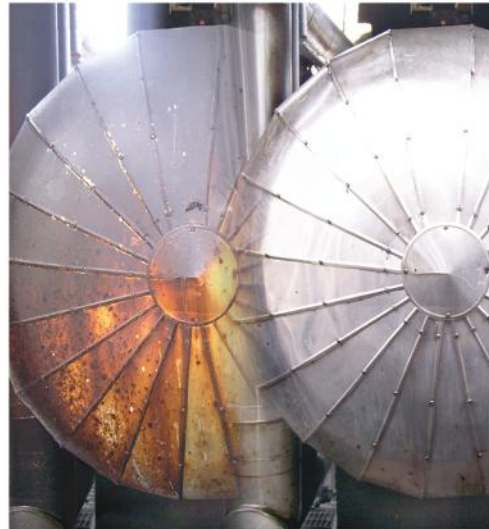


Industrial &  
Institutional  
**Applications  
Manual**





## Aerospace



**Primary Business:** Manufacture & maintenance aircraft and shuttles, missiles, satellites, ground-support equipment, etc.

**Description of Primary Usage:** Aircraft cleaning with Extreme Simple Green at dilutions up to 13:1. Parts washing @ 4:1 with Crystal, or Extreme. Pressure washing tarmacs @ 30:1 to 50:1 with Crystal (dilution depends on severity or grease/grime to be removed.) Safety Towels offer a non citrus alternative to harsh citrus based hand towels.

**Additional Products:** #79260 60-gallon Parts Washers, #13285 5-Way Proportioner, #42128 Hand Cleaner Gel.

## Aircraft Maintenance



**Primary Business:** Ground-crew support of airplanes (major airlines, corporate air fleets, air-transport companies) Ancillary Business: Airline catering companies (see Food & Beverage info.)

**Description of Primary Usage:** Extreme Simple Green with dilutions up to 13:1. Parts washing @ 4:1 with Crystal, Pressure washing tarmacs @ 30:1 to 50:1. Cleaning & disinfecting restrooms with Simple Green d Pro 3 @ 21:1 & 64:1 respectively. Cleaning mirrors, glass & chrome with original Simple Green @ 150:1. Safety Towels offer a non citrus alternative to harsh citrus based hand towels.

**Additional Products:** #79260 60-gallon Parts Washers, #13285 5-Way Proportioners, #10046 Scrubbing Pads, #42150 Hand Cleaner Gel.

## Automotive Maintenance & Repair



**Primary Business:** Repairing and maintaining mechanical & electrical systems on trucks and autos.

**Description of Primary Usage:** Parts washing @ 4:1 with Crystal or Extreme, Cleaning shop floors, walls, service bays and hydraulic lifts @ 20:1 with Crystal or Extreme Simple green at dilutions up to 50:1. Cleaning and disinfecting bathrooms with Simple Green d Pro 3 @16:1 and 64:1 respectively. Safety Towels offer a non citrus alternative to harsh citrus based hand towels.

**Additional Products:** #79260 60-gallon Parts Washers, #13285 5-Way Proportioners, #13291 Foamers, #42128 Hand Cleaner Gel.

## Beverage Production/ Bottling Plants

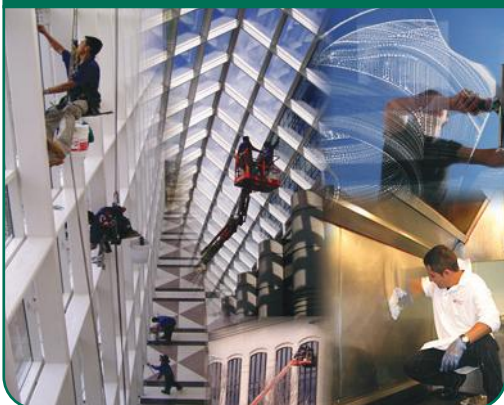


**Primary Business:** Manufacturing and bottling beverages.

**Description of Primary Usage:** Disinfecting and sanitizing floors and all areas with Simple Green d Pro 5 at 64:1. and 128:1, respectively. Parts washing @ 4:1 with Crystal or Extreme, basic machinery and conveyor maintenance @ 10:1 with Crystal, cleaning floors, walls and counters @ 20:1 with Crystal. Safety towels offer a non citrus alternative to harsh citrus based hand towels. Clean and disinfect non-processing areas with Simple Green Pro 3 @ 21:1 and 64:1, respectively. Safety Towels offer a non citrus alternative to harsh citrus based hand towels.

**Additional Products:** #79130 30-gallon Parts Washers, #13285 5-Way Proportioners, #13291 Foamers, #42128 Hand Cleaner Gel.

## Building Maintenance & Contact Cleaning also see Hotel/Motel Maintenance



**Primary Business:** Cleaning all interior and exterior areas of commercial and industrial buildings.

**Description of Primary Usage:** Cleaning floors, walls, ceilings @ 10:1 with original Simple Green (@ 20:1 with Crystal). Cleaning windows @128:1 with Crystal. Cleaning carpets with steam-extraction machine @ 3 oz to 1 gallon water with Simple Green Carpet Cleaner. Cleaning, deodorizing, and disinfecting restrooms and locker rooms @ 21:1 and 64:1 respectively with Simple Green d Pro 3. Parts washing @ 4:1 with Crystal or Extreme. Safety Towels offer a non citrus alternative to harsh citrus based hand towels.

**Additional Products:** #79130 30-gallon Parts Washer, #13291 Foamers, #10046 Scrubbing Pads.

## Construction



**Primary Business:** Constructing buildings, dams, highways, roads and other public works projects, and maintaining construction equipment (frontloaders, backhoes, tractors, graders, cranes, forklifts, etc.)

**Description of Primary Usage:** Parts washing @ 2:1 with Crystal or Extreme, Fleet maintenance (exterior cleaning) @ 40:1 with Crystal in steam cleaner, cleaning shop floors @ 15:1 with Crystal. Safety towels offer a non citrus alternative to harsh citrus based hand towels.

**Additional Products:** #79260 60-gallon Parts Washers, #13285 5-Way Proportioners, #13291 Foamer, #42150 Hand Cleaner Gel.



### Electronics Manufacturing & Repair



**Primary Business:** Production and/or repair of electronic equipment, printed circuit board manufacture, silicon chip manufacture (flux removal).

**Description of Primary Usage:** Bench-top cleaning applications: cleaning plastic equipment cases @ 20:1 with Extreme, cleaning glass dial-covers & screens @ 150:1 with Crystal or Extreme, removal of solder-flux @ full-strength with Extreme (followed by a water rinse, and then air drying.)

**Additional Products:** #13285 5-Way Proportioners

### Equipment or Product Manufacturing & Repair



**Primary Business:** Production and/or repair of mechanical equipment (also see Machining/Metal Working and Plastics sections.)

**Description of Primary Usage:** Dip-tank parts cleaning @ 5:1 with Crystal or Extreme. Parts washing @ 4:1 with Crystal or Extreme. Cleaning concrete floors @ 20:1 with Crystal. Cleaning conveyor systems @ 20:1 with Crystal. Cleaning & disinfecting restrooms, health rooms & cafeteria @ 21:1 & 64:1 respectively with Simple Green d Pro 3. Safety towels offer a non citrus alternative to harsh citrus based hand towels.

**Additional Products:** #79130 30-gallon Parts Washers, #13285 5-Way Proportioner, #13291 Foamer.

### Food Production: Meat & Poultry Processing Plants & Livestock Farms



**Primary Business:** Processing meat or poultry products, and/or raising and transporting livestock.

**Description of Primary Usage:** Cleaning floors/walls/ceilings/pens/stalls @ 10:1 with Crystal (7:1 with original Simple Green for added deodorizing), disinfect with Simple Green Pro 5 @ 64:1, sanitize with 128:1. Cleaning floor-mats @ 30:1 with Crystal or Extreme in pressure washer, parts washing @ 4:1 with Crystal or Extreme, cleaning & disinfecting restrooms @ 21:1 or 64:1 respectively with Simple Green d Pro 3. Cleaning restroom fixtures and brushed-steel food locker doors with Lime Scale Remover (ready to use) and Simple Green Stainless Cleaner. Safety Towels offer a non citrus alternative to harsh citrus based hand towels.

**Additional Products:** #79130 30-gallon Parts Washer, #13291 Foamer.

## Grounds Maintenance



**Primary Business:** Maintenance of parks, golf courses, public & private grounds, and maintenance of tools & equipment used.

**Description of Primary Usage:** Steam-cleaning mowers @ 30:1 with Crystal or Extreme, parts washing @ 4:1 with Crystal or Extreme, pressure-wash concrete walkways & parking lots @ 15:1 with original Simple Green or Crystal Simple Green (@ 20:1 if using Crystal). Safety Towels offer a non citrus alternative to harsh citrus based hand towels. Be careful not to let Extreme stay on asphalt too long.

**Additional Products:** #79260 60-gallon Parts Washer, #42150 & #42128 Hand Cleaner Gel.

## Highway & Streets Maintenance



**Primary Business:** Maintaining public thoroughfares, signs, turnstiles and maintaining equipment & vehicles.

**Description of Primary Usage:** Fleet maintenance (exteriors) @ 40:1 with Crystal or Extreme using steam-cleaner, parts washing @ 4:1 with Crystal or Extreme. Cleaning shop floors, walls and tools @ 10:1 with Crystal. Safety Towels offer a non citrus alternative to harsh citrus based hand towels.

**Additional Products:** #79260 60-gallon Parts Washers, #13285 5-Way Proportioners, #42150 & #42128 Hand Cleaner Gel (5 oz tubes for glove boxes)

## Lumber & Paper Mills



**Primary Business:** Sawing wood, chipping wood, creating pulp, pressing paper.

**Description of Primary Usage:** Removing pitch from saw blades @ 1:1 with Extreme. Parts washing @ 4:1 with Crystal or Extreme. Cleaning concrete floors @ 20:1 with Crystal. Cleaning machinery cabinets @ 10:1 with Crystal. Cleaning & disinfecting restrooms @ 21:1 & 64:1 respectively with Simple Green d Pro 3. Cleaning restroom fixtures with Lime Scale Remover (ready to use).

**Additional Products:** #79260 60-gallon Parts Washers, #13285 5-Way Proportioners, #42128 Hand Cleaner Gel.



## Machining & Metalworking



**Primary Business:** Cutting, grinding, bending, de-burring and plating of metals.

**Description of Primary Usage:** Cleaning outside of equipment @ 10:1 with Crystal or Extreme. Cleaning out sumps @ 16:1 or disinfecting sumps @ 64:1 with Simple Green d Pro 3. Parts washing @ 4:1 with Crystal or Extreme, cleaning shop floors, walls, counters @ 10:1 with Crystal. Safety Towels offer a non citrus alternative to harsh citrus based hand towels.

**Additional Products:** #79260 60-gallon Parts Washer, #42150 & #42128 Hand Cleaner Gel.

## Mining



**Primary Business:** Removal of minerals from below ground (shaft mining/strip mining), equipment maintenance.

**Description of Primary Usage:** Parts washing @ 2:1 with Crystal or 5:1 Extreme, Equipment exterior maintenance @ 30:1 with Crystal or Extreme in steam cleaner, cleaning shop floors @ 15:1 with Crystal. Safety Towels offer a non citrus alternative to harsh citrus based hand towels.

**Additional Products:** #79260 60-gallon Parts Washers, #13285 5-Way Proportioners, #13291 Foamers, #42150 Hand Cleaner Gel.

## Oil & Fuel Production: Drilling(on and offshore)



**Primary Business:** Removing crude oil from deposits beneath the earth and transporting to refineries.

**Description of Primary Usage:** Parts washing @ 4:1 with Crystal or Extreme, pressure-washing drill rigs, platforms, rails, pumps, pulleys, storage tanks, etc. @ 30:1 with Crystal. Cleaning & disinfecting restrooms, showers, locker rooms and dining areas @ 21:1 & 64:1 respectively with Simple Green d Pro 3. Safety Towels offer a non citrus alternative to harsh citrus based hand towels.

**Additional Products:** #79260 60-gallon Parts Washers, #13291 Foamers, #42128 Hand Cleaner Gel.

## Oil & Fuel Production: Refining



**Primary Business:** Cracking crude oil and separating it into various grades of solvents, fuels and lubricants. Blending and packaging of these various products.

**Description of Primary Usage:** Parts washing @ 4:1 with Crystal or Extreme. General refinery maintenance (cleaning exteriors of pipelines, pumps, vats, equipment, etc.) @ 15:1 with Crystal or Extreme (spray/mop/wipe) or 30:1 with Crystal or Extreme using pressure-washer. Safety Towels offer a non citrus alternative to harsh citrus based hand towels.

**Additional Products:** #79260 60-gallon Parts Washers, #13285 5-Way Proportioners, #13291 Foamer #42150 Hand Cleaner Gel, #30301 Simple Green d Pro 3 or #30501 Simple Green d Pro 5 (for disinfecting restrooms & locker)

## Painting Contractor, Commercial Painting *also paint prep within other manufacturing businesses*



**Primary Business:** Commercial painting / interior & exterior.

**Description of Primary Usage:** Parts washing and cleaning maintenance of spray equipment & brushes @ 4:1 with Crystal, precleaning surfaces to paint @ 20:1 with Crystal (typically applied with Hudson-type sprayer & rinsed with clean water), pre-cleaning siding, stucco, brick or block exteriors @ 30:1 with Crystal. Safety Towels offer a non citrus alternative to harsh citrus based hand towels.

**Additional Products:** #79260 60-gallon Parts Washer, #15005 Carpet Cleaner (used @ 20:1 for post-paint cleanup), #42150 Hand Cleaner Gel.

## Pharmaceutical & Cosmetics Manufacturing



**Primary Business:** Blending and packaging of medicines, personal hygiene and cosmetics products.

**Description of Primary Usage:** Vat cleaning @ 3:1 with Crystal (protocol established), Parts washing @ 4:1 with Crystal or Extreme, cleaning facility floors and conveyor systems @ 20:1 with Crystal. Cleaning & disinfecting restrooms @ 21:1 & 64:1 respectively with Simple Green d Pro 3.

**Additional Products:** #79130 30-gallon Parts Washer, #13285 5-Way Proportioner, #13291 Foamer, #50032 Lime Scale Remover (stainless steel vat exteriors).



## Plastics Moulding & Extrusion



**Primary Business:** Melting and shaping of plastics.

**Description of Primary Usage:** Parts washing @ 4:1 with Crystal or Extreme, cleaning of extrusion equipment @ 5:1 with Crystal or Extreme, cleaning of moulded and extruded parts @ 20:1 with Crystal or Extreme, cleaning shop floors @ 20:1 with Crystal. Safety Towels offer a non citrus alternative to harsh citrus based hand towels.

**Additional Products:** #79260 60-gallon Parts Washer, #42150 Hand Cleaner Gel.

## Sanitation Waste Haulers, Recycling, Landfill



**Primary Business:** Collection and disposal of refuse, and/or hazardous waste.

**Description of Primary Usage:** Pressure-washing trucks and collection bins @ 10:1 with original Simple Green, Parts washing @ 4:1 with Crystal or Extreme, cleaning concrete shop floors and walls @ 20:1 with Crystal. Clean and disinfect with 21:1 and 64:1 respectively with Simple Green d Pro 3. Safety Towels offer a non citrus alternative to harsh citrus based hand towels.

**Additional Products:** #79260 60-gallon Parts Washers, #13285 5-Way Proportioners, #42128 & #42150 Hand Cleaner Gel.

## Shipping: Transport Fleets & Cruise Lines



**Primary Business:** Ocean transport of goods or people.

**Description of Primary Usage: Transport Fleets:** Bulkhead/bilge cleaning with Crystal @ 10:1 (dilution depends on viscosity & properties of material being cleaned out), deck cleaning @ 15:1 with Crystal. Engine & equipment maintenance cleaning @ 5:1 with Crystal. Parts washing @ 3:1 with Crystal or Extreme. Cleaning & disinfecting galleys, heads, sick bays, locker rooms, shower rooms @ 21:1 & 64:1 respectively with Simple Green d Pro 3. **Cruise Lines:** Cleaning decks & lounge chairs @ 15:1 with Crystal, cabin house-keeping (see Building Maintenance and Hotels & Motels sections), engine & equipment maintenance & Parts washing as above.

**Additional Products:** #79260 60-gallon Parts Washer, #13285 5-Way Proportioner, #13291 Foamer.



## Steel and Metals Production



**Primary Business:** Smelting of ores, removal of contaminants, and forming pipe, rod & bar (extrusion), sheet (rolling), or specialized forms (pouring/moulding).

**Description of Primary Usage:** 2,000-gallon dip tank cleaning @ 10:1 with Crystal or Extreme. Parts washing @ 4:1 with Crystal or Extreme. Cleaning production house floors @ 20:1 with Crystal in tenant-style machine. Cleaning & disinfecting restrooms @ 21:1 & 64:1 respectively with Simple Green d Pro 3. Safety Towels offer a non citrus alternative to harsh citrus based hand towels.

**Additional Products:** #79260 60-gallon Parts Washers, #13285 5-Way Proportioner, #13291 Foamer, #42128 Hand Cleaner Gel.

## Textile Manufacturing



**Primary Business:** Manufacturing cloth/ knitting, dyeing, and assembly.

**Description of Primary Usage:** General facility (walls, folding tables, cloth bins, etc.) and equipment maintenance @ 10:1 with Crystal or Extreme, Cleaning concrete floors @ 20:1 with Crystal in tenant machine. Parts washing @ 4:1 with Crystal or Extreme. Cleaning & disinfecting restrooms health rooms & cafeteria @ 21:1, 64:1 respectively with Simple Green d Pro 3, or cleaning, disinfecting, and sanitizing @ 16:1, 64:1, and 128:1 respectively with Simple Green d Pro 5. Safety towels offer a non citrus alternative to harsh citrus based hand towels.

**Additional Products:** #79260 60-gallon Parts Washers (be sure to order extra prefilters to catch cloth-fibers that adhere to parts and can clog pump), #13285 5-Way Proportioner, #13291 Foamer.

## Transportation: Fleet Maintenance, Trucking, Buses, and Van Lines



**Primary Business:** Trucking services, van lines, charter bus services, vehicle fleets – maintaining vehicles.

**Description of Primary Usage:** Parts washing @ 4:1 with Crystal or Extreme. Pressure-washing truck/bus/vehicle exteriors @ 50:1 with Crystal. Cleaning interior upholstery and carpets @ 30:1 with original Simple Green. Cleaning shop floors, service bays & hydraulic lifts @ 10:1 with Crystal using Foamer. Safety Towels offer a non citrus alternative to harsh citrus based hand towels.

**Additional Products:** #79260 60-gallon Parts Washers, #13285 5-Way Proportioners, #13291 Foamers, #50005 Lime Scale Remover (for brushed steel & aluminum exteriors in hard-water areas), #42150 Hand Cleaner Gel.

## Transportation: Railways & Subways



**Primary Business:** Rail transit of goods and people.

**Description of Primary Usage:** Parts washing @ 4:1 with Crystal or Extreme. Pressure washing railcar exteriors @ 15:1 with Extreme. Cleaning interior seats, walls and floors @ 30:1 with Crystal. Safety Towels offer a non citrus alternative to harsh citrus based hand towels. Disinfecting against bloodborne pathogens with Simple green d Pro 5 @ 64:1.

**Additional Products:** #79260 60-gallon Parts Washers, #13285 5-Way Proportioners, #13291 Foamer, #50005 Lime Scale Remover for steel and aluminum cars and fixtures in hard-water areas), #42128 Hand Cleaner Gel.

## Utilities: Nuclear, Electric, Telephone, Gas, Cable Television



**Primary Business:** Provision of utility services and maintenance of utility delivery systems/equipment.

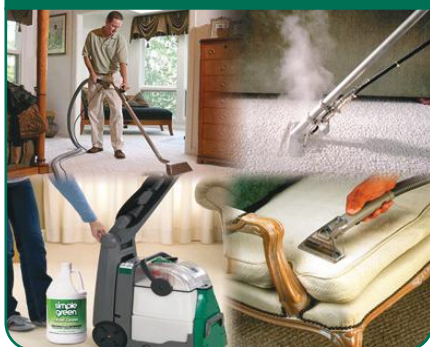
**Description of Primary Usage:** Parts washing @ 4:1 with Crystal or Extreme. Pressure washing of service vehicle exteriors and lift equipment @ 50:1 with Crystal. Cleaning shop floors, walls and counters @ 10:1 with Crystal, cleaning hands while in the field with Hand Cleaner Waterless Gel. Safety Towels offer a non citrus alternative to harsh citrus based hand towels.

**Additional Products:** #79260 60-gallon Parts Washers, #13285 5-Way Proportioners, #13291 Foamers, #50005 Lime Scale Remover (for brushed steel & aluminum exteriors in hard-water areas), #42150 Hand Cleaner Gel.



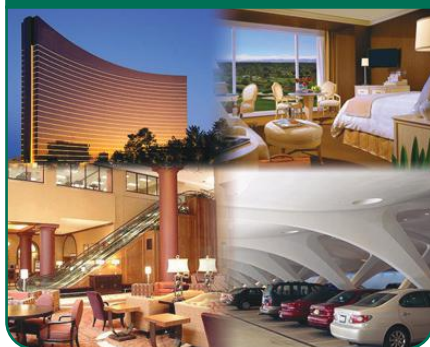
# Additional Uses Within Multiple Facilities:

## Carpet & Upholstery Care



Hot-water extraction or steam machines – use either Crystal @ 20:1 or Simple Green Carpet Cleaner @ 3 oz. to every 1 gal. of water. Spot & stain treatment on carpet or upholstery – (test on inconspicuous area first) Wet spot with plain water, spray spot with either Simple Green Carpet or Crystal @ full strength, blot with clean, white cloth or paper towels and clean water. Safety towels offer a non citrus alternative to harsh citrus based hand towels.

## Hotels & Motels



Review Carpet & Upholstery cleaning above, and Restroom cleaning below. Also, visit Engineering Dept. for Parts washing @ 4:1 with Crystal or Extreme. Elevator & escalator maintenance @ 5:1 with Crystal or 10:1 with Extreme, parking structure & driveway maintenance @ 20:1 with Crystal using a pressure washer or @ 5:1 with Crystal for spot treating oil spills on concrete/asphalt using a bucket and shop-broom or scrub brush. Stainless Steel Cleaner for elevator doors, handrails, escalators, lobby door casings & handles, kitchen, serveware, etc.

## Locker rooms, Restrooms, Health rooms and Spas



Cleaning and disinfecting floors\*, walls, counters, sinks, toilets, showers & tubs with Simple Green d Pro 3 @ 21:1 and 64:1 respectively (consider showing the #13291 Foamer for cleaning large bathrooms or locker rooms that don't have wood or other surfaces that are sensitive to water or cleaners), with Simple Green d Pro 5 at 16:1 & 64:1 respectively if a blood-borne pathogen compliant product is required. [\*Do not use heavy cleaning dilution ratios (16:1 or 21:1) on gloss-finished floors, or plan to re-wax afterward.] Removing hard water stains/ buildup from glass shower doors, sinks, tubs, tile floors\*, faucets & fixtures with Simple Green Lime Scale Remover (ready to use). [\*use on noncolored grout – may remove color from colored grout. Simple Green Stainless Cleaner on all metal surfaces.]

## Vending Machines, Rental Equipment & Public Appliances



Clean & disinfect public phones, phone booths, rental equipment (ie., wheelchairs, walkers, crutches, rental furniture, cable boxes, etc.) and vending machines with Simple Green d Pro 3 @ 21:1 & 64:1 respectively, or with Simple Green d Pro 5 if a blood-borne pathogen compliant disinfectant is needed @ 16:1 & 64:1 respectively.

Please speak with your **Simple Green** sales manager or manufacturer’s representative about any specific application questions that occur in your territory that may not be included in this manual, or call **Simple Green** Headquarters at **(800) 228-0709** and ask for industrial customer service.

**EXAMPLES IN YOUR TERRITORY:**

	Photo (if available)	Application info: Simple Green products used,





Simple Green USA World Headquarters	Simple Green USA Midwest	Simple Green France
15922 Pacific Coast Hwy Huntington Beach, CA 92649 562-795-6000 800-228-0709	8725 West Higgins Road Suite 750 Chicago, IL 60631 847-318-8888	Immeuble ORIX 16 Avenue Jean Jaures 94600-Choisy-Le-Roi, France 011-331-48-90-66-99
Simple Green Latin America	Simple Green Brazil	Simple Green New Zealand/Australia
Mar Caribe 1150, Suite 1A Guadalajara, Jalisco CP44610 Mexico 011-523-33-817-3119	Rua Gomes de Carvalho, 892 cj 96 04547-003 Vila Olímpia São Paulo SP, Brasil 55-11-3059-2309	2 Northboro Road, Hauraki North Shore City 0622 Takapuna, Auckland, New Zealand 011-64-9-489-6827